



**Republic of Mozambique  
State Administration and Public Function Ministry  
National Institute for Disaster Management**

**IGOR MANUEL BERNARDO HONWANA**

**Monitoring Officer (GIS technician)**

**CENOE**

**National Center for Emergency Operation**

**INGC**

***Disaster Management Institute***

**Beijing  
2015**



**INGC**

***INGC operation***

***Direction and Coordination on Disaster Management***

***Strategy border to Guiding Plan (Context)***

- ***Vulnerability Reduction***
- ***Prevention and Mitigation***





## CENOE

### Centralize the effort on coordination

- intersectorial
- inter-institutional
- international



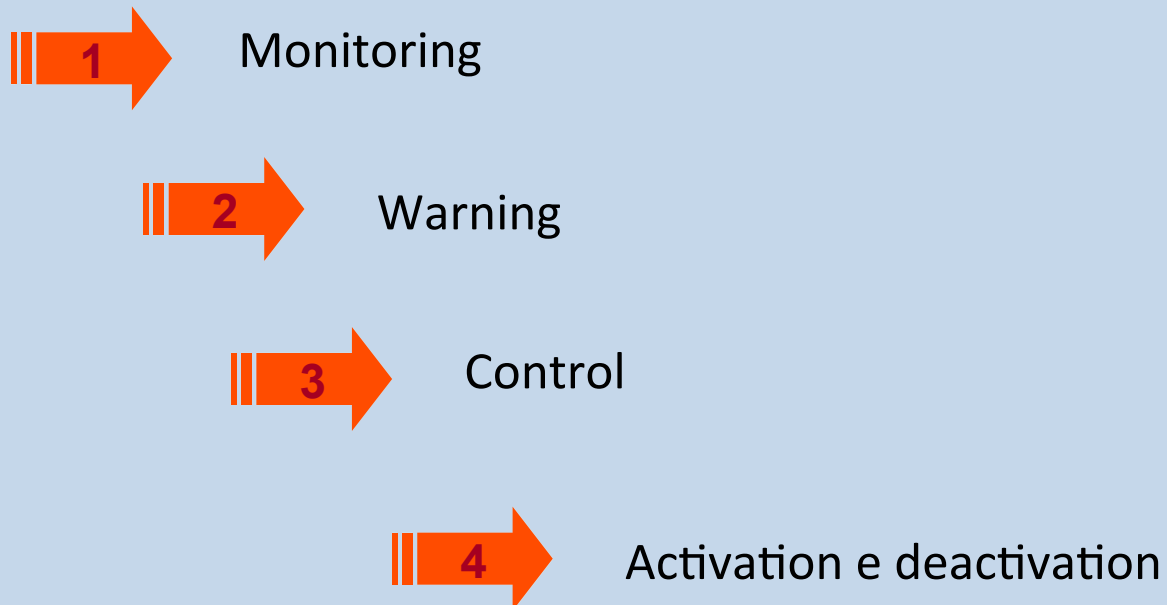
Answer

- Fast
- efficient
- Powerfull

**Racionalize the available resources**

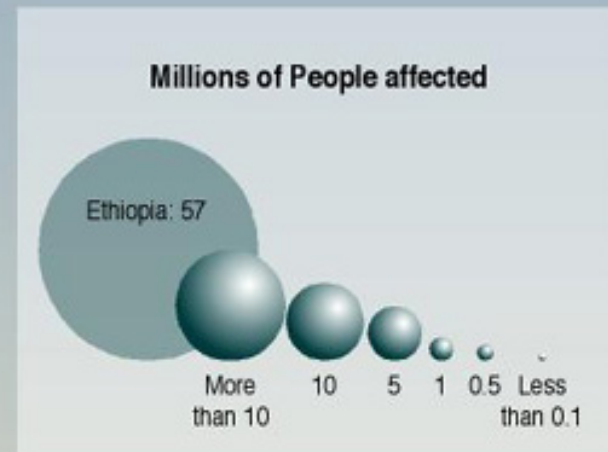
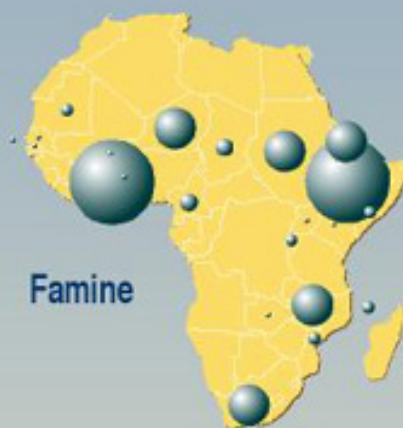


## To give a guide tool





## People Affected by Natural Disasters between 1971-2000



Source: The Office of U.S. Foreign Disaster Assistance (OFDA), The Centre for Research on the Epidemiology of Disasters (CRED), International Disaster Database, [www.cred.be/emdat](http://www.cred.be/emdat), Université Catholique de Louvain, Brussel, Belgium.

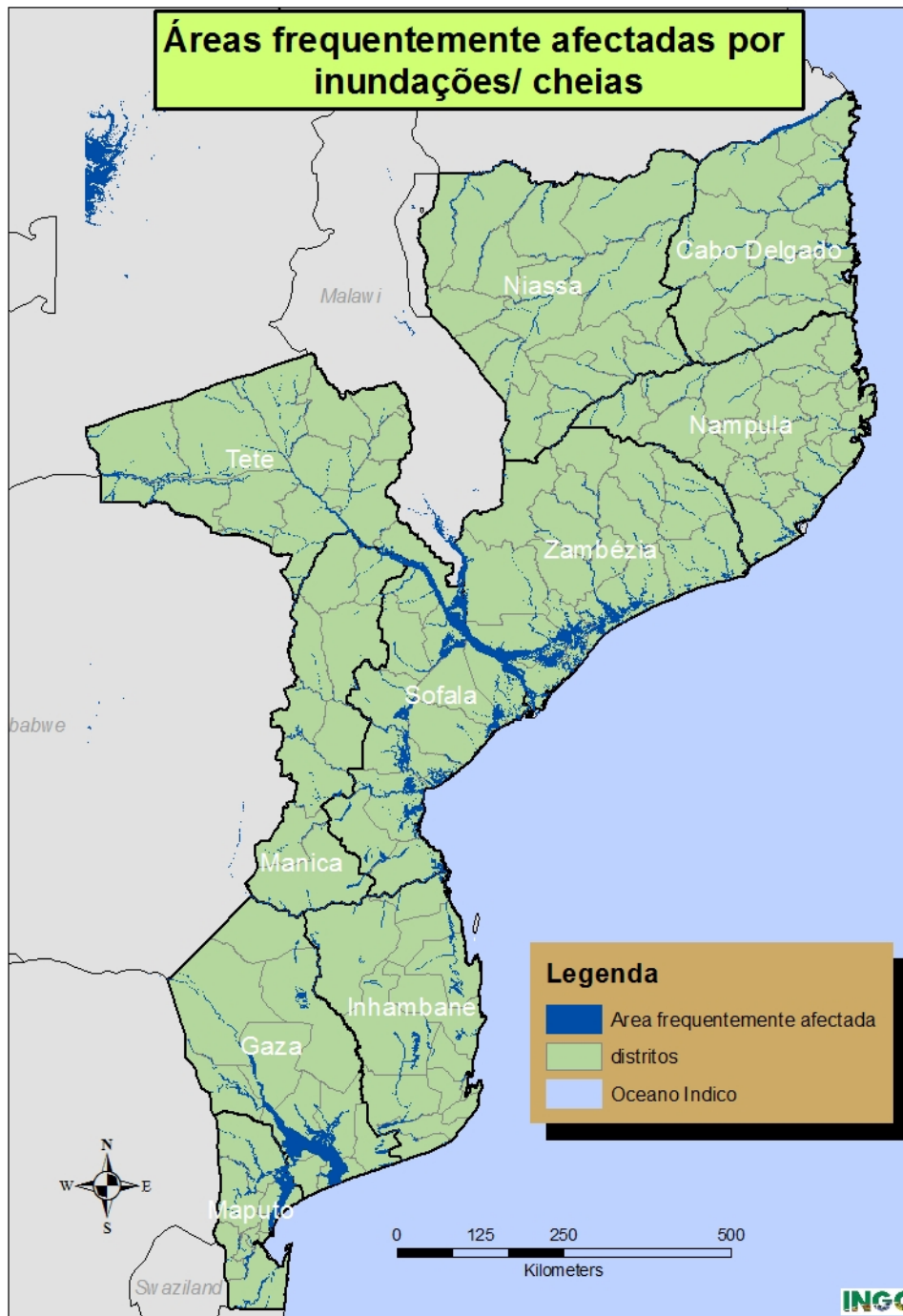


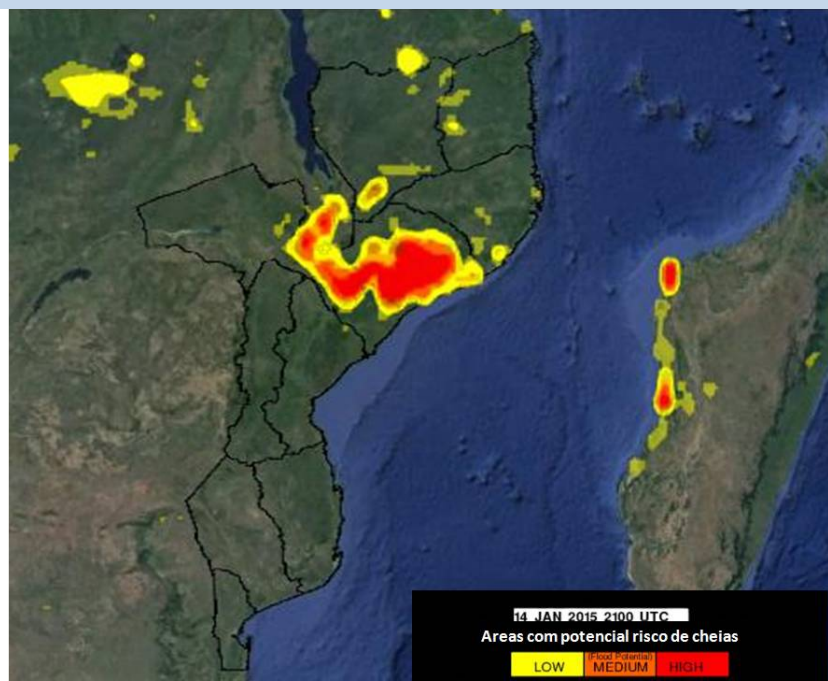
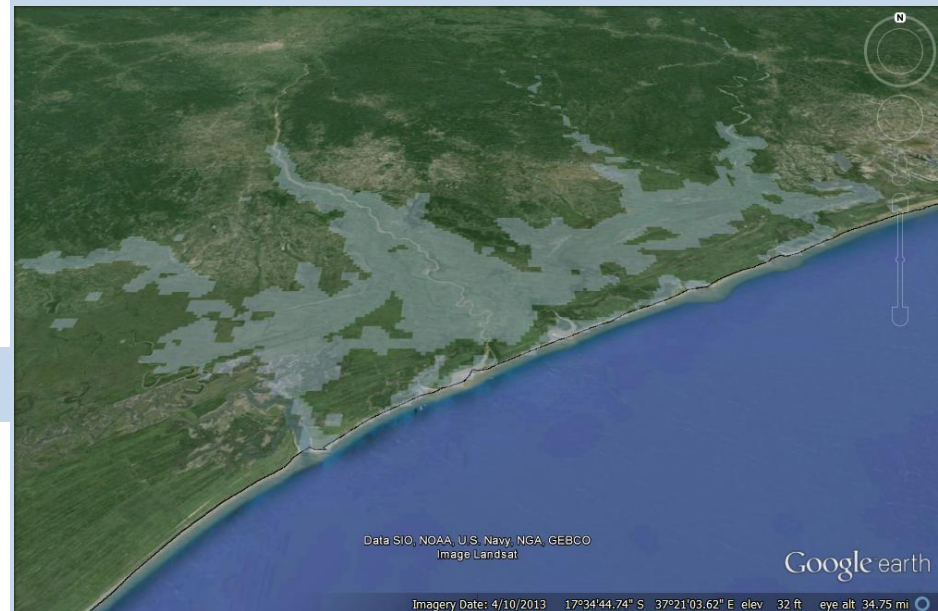
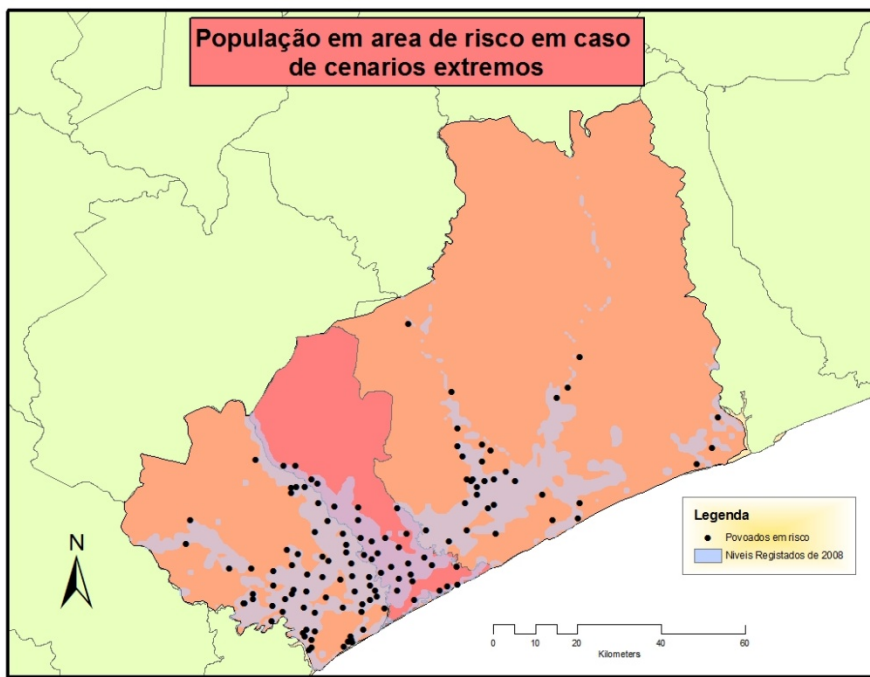
GRID  
Arendal

DELPHINE DIGOUT  
BASED ON A SKETCH BY PHILIPPE REKACEWICZ  
JUNE 2002



## Áreas frequentemente afectadas por inundações/ cheias




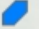





## PROVINCIA DA ZAMBEZIA

Diferença de área de inundação

### Legend

-  Bacia do Licungo
-  Área inundada até 05 de Fevereiro
-  Área inundada até 09 de Fevereiro

Google earth

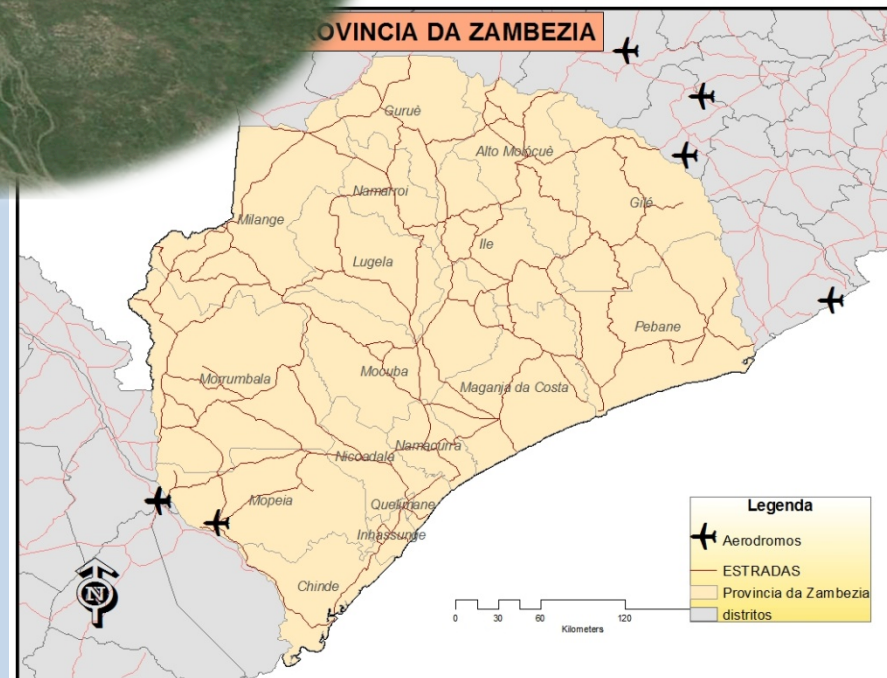
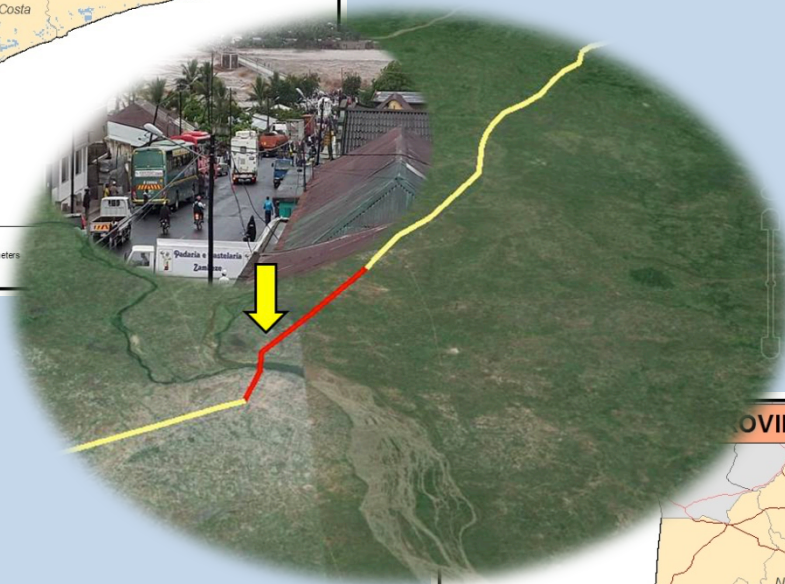
Image Landsat

Data SIO, NOAA, U.S. Navy, NGA, GEBCO

200 km









# 1. Association with UN-SPIDER

Mozambique has been working with **UNOSAT** since the year 2011 through the provision of satellite imagery/products, on a request during Emergency situations (eg. **Floods** )



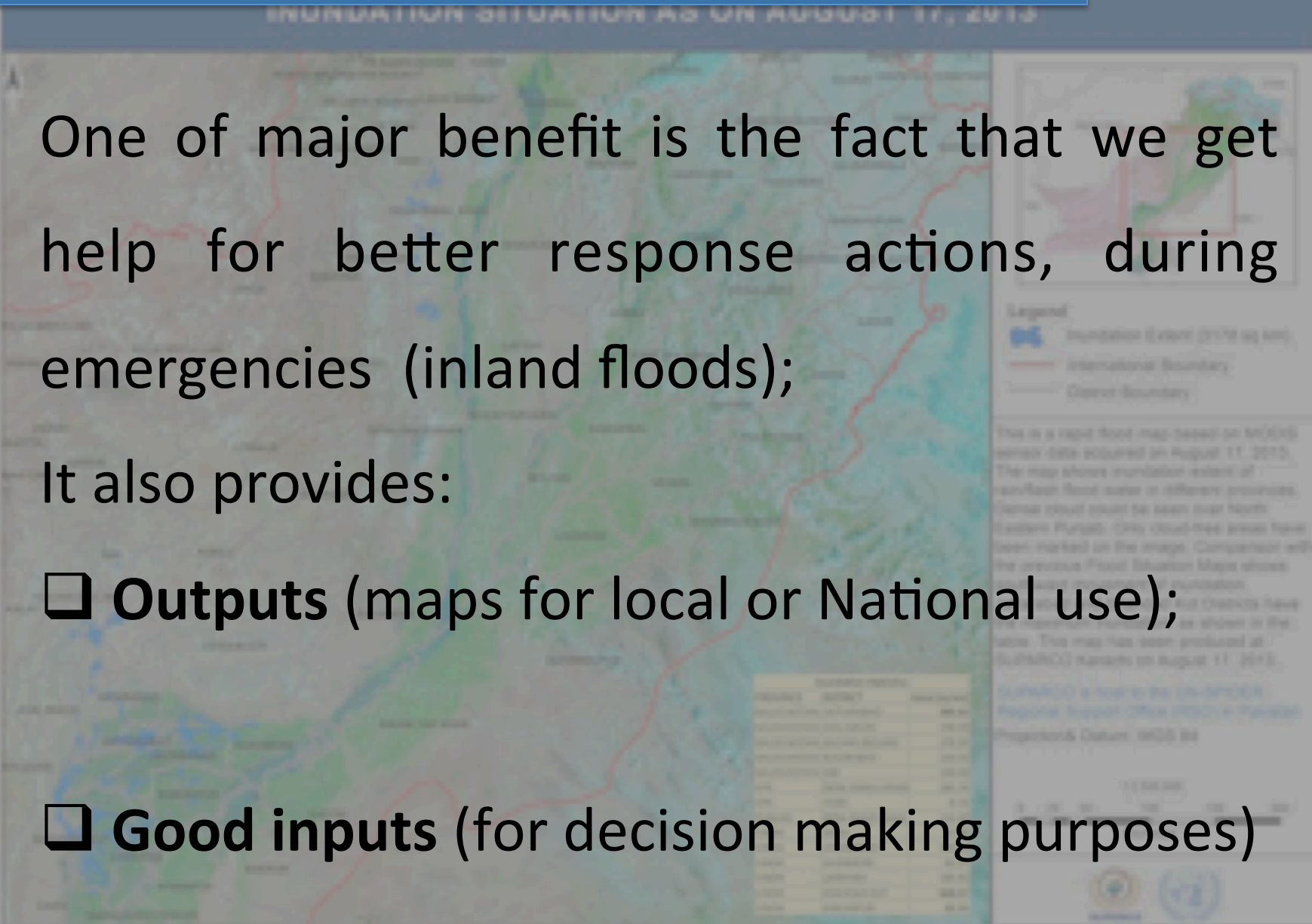


## 2. Benefits of association/Impact of the work

One of major benefit is the fact that we get help for better response actions, during emergencies (inland floods);

It also provides:

- Outputs** (maps for local or National use);
- Good inputs** (for decision making purposes)



### 3. Expectation/future plans



Continue to receive support at all levels from the organization in order to make the Natural Disasters response process, more efficient, through:

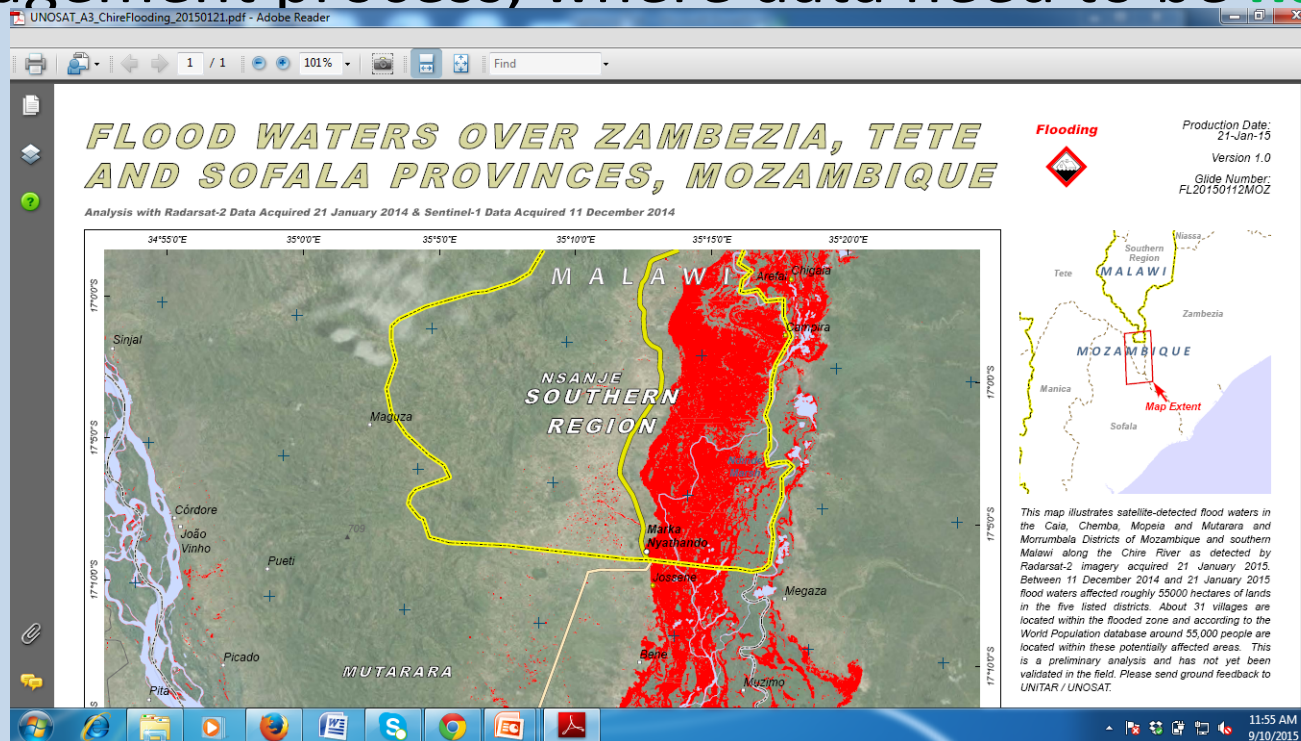
- Inter-institutional agreement/ Memorandum to fully support **INGC/CENOE** on R.S. (not only during Emergency Situations);
- Provide technical support for Manual/ Reports produced by **INGC/CENOE**;
- Support **INGC/CENOE** the installation of a strong Remote Sensing sector (**Listening is about to start**);





## 4. Constraints

The biggest constraint is the type of information that has been provided (**PDF format**), which is not the **most appropriate** for an Emergency management process, where data need to be **handled**.





MUITO OBRIGADO

MUITO OBRIGADO

Thank you

Thank you

